



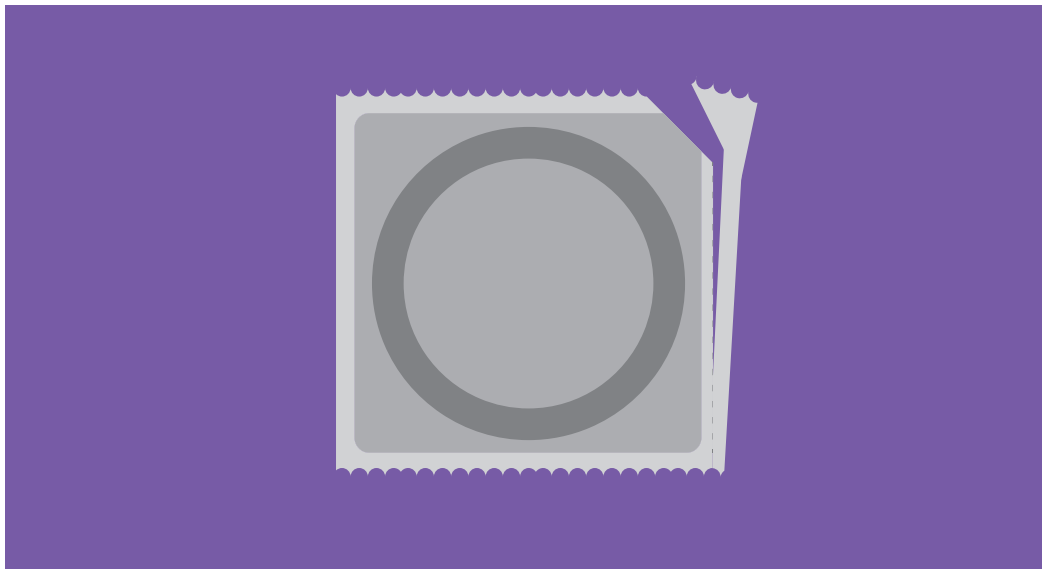
CONSENT FROM PARTNER

WHY IS CONSENT IMPORTANT?



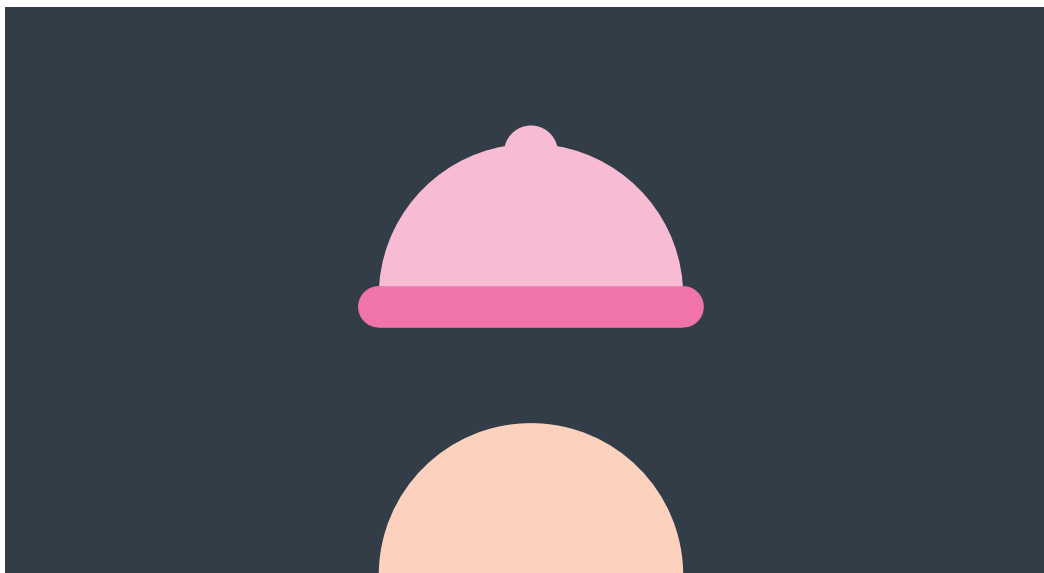
CHECK THE EXPIRY DATE

**WHAT CAN HAPPEN IF
A CONDOM HAS EXPIRED?**



**OPEN THE CONDOM PACKET CAREFULLY
AND REMOVE CONDOM**

**WHY BE CAREFUL WHEN OPENING
A CONDOM PACKET?**



**CHECK CONDOM IS AROUND THE
RIGHT WAY FOR UNROLLING**

WHICH WAY IS THE RIGHT WAY?

**WHAT SHOULD YOU DO IF YOU PUT
A CONDOM ON THE WRONG WAY?**



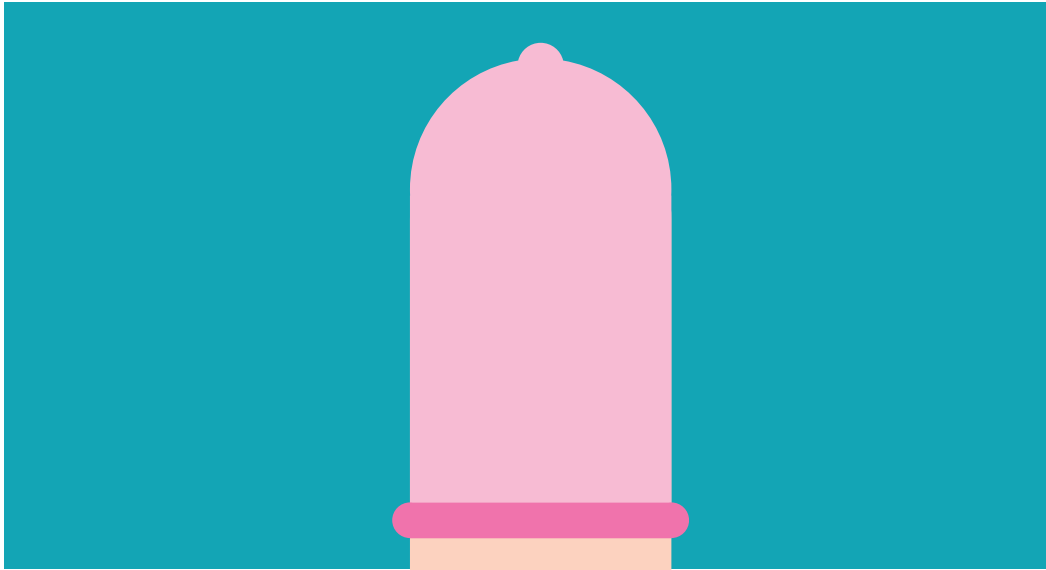
SQUEEZE TIP OF CONDOM TO REMOVE AIR

**WHY IS IT IMPORTANT TO REMOVE
AIR FROM THE CONDOM?**



**WHILE HOLDING THE TIP,
PLACE CONDOM ON TOP OF PENIS/TOY/ETC**





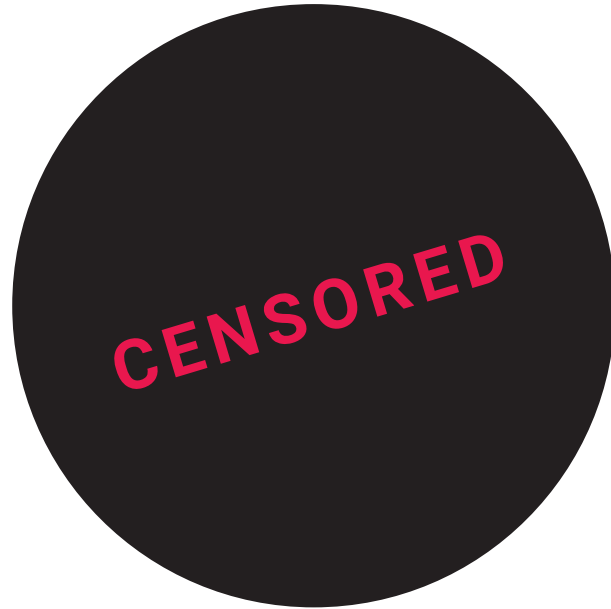
**ROLL CONDOM DOWN THE ENTIRE
LENGTH OF PENIS/TOY/ETC**





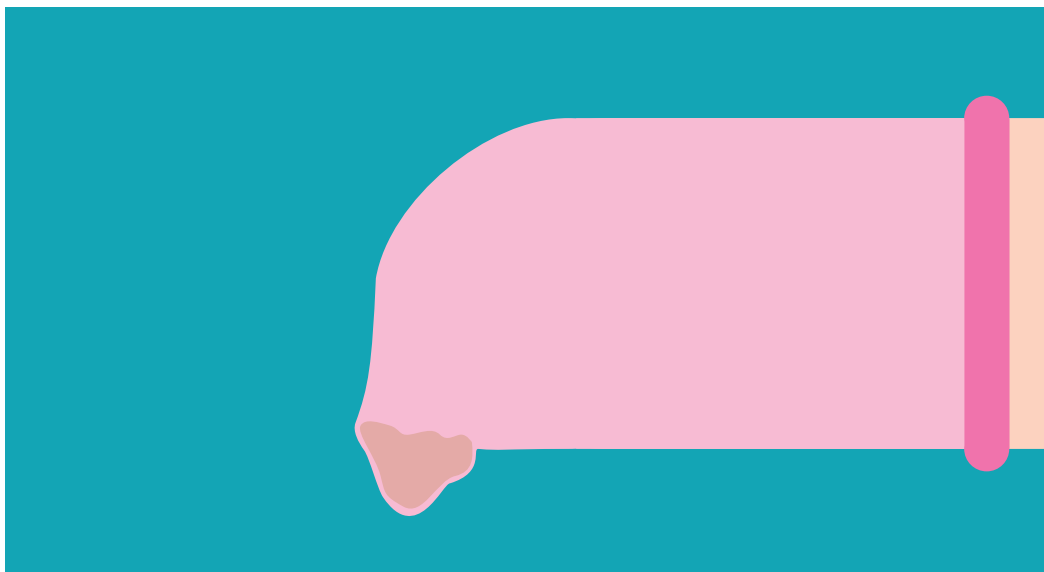
APPLY WATER BASED LUBRICANT

HOW CAN LUBRICANT HELP?



SEXY TIMES





**HOLD BASE OF CONDOM
WHILE WITHDRAWING**

**WHY IS IT IMPORTANT TO HOLD
THE BASE OF THE CONDOM?**

**IF THE CONDOM HAS EJACULATE
IN IT, WHAT SHOULD WE
BE CAREFUL ABOUT?**



**REMOVE THE CONDOM,
TIE A KNOT IN IT AND PUT IT IN THE BIN**

**WHY PUT A CONDOM IN A BIN?
(AND NOT IN THE TOILET!!!)**